

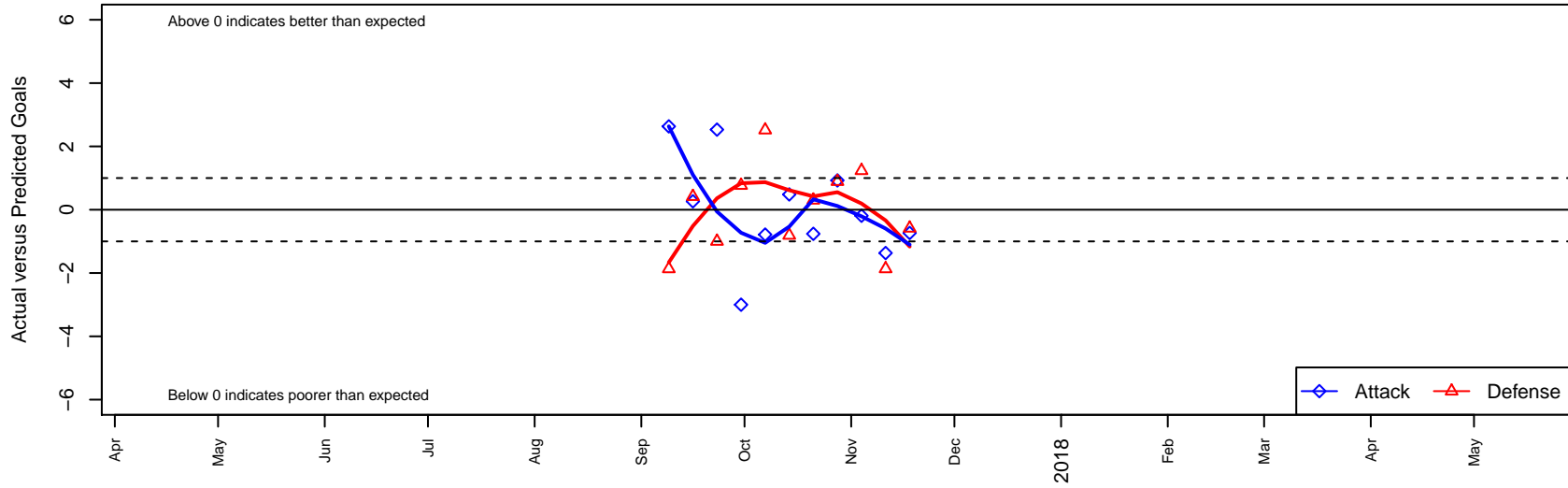
# LSDSC United White B05

, WA  
B05 total strength=832  
attack=1.61 defense=0.77  
fall league = SSUL B05 14 Div 2

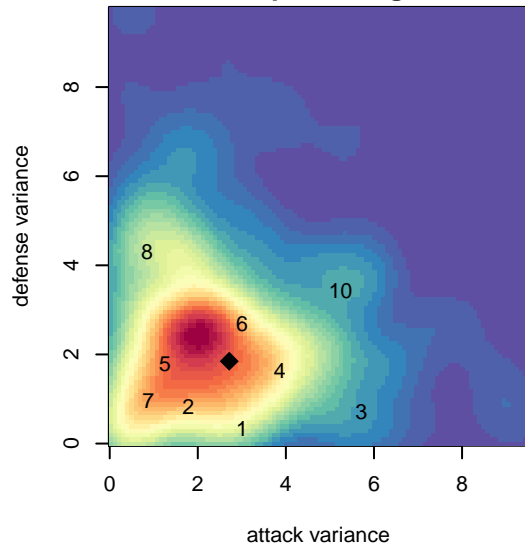
alt names used:  
LSDSC Lakewood United 04 White

Venues played:  
2017 SSUL B05 14 Div 2

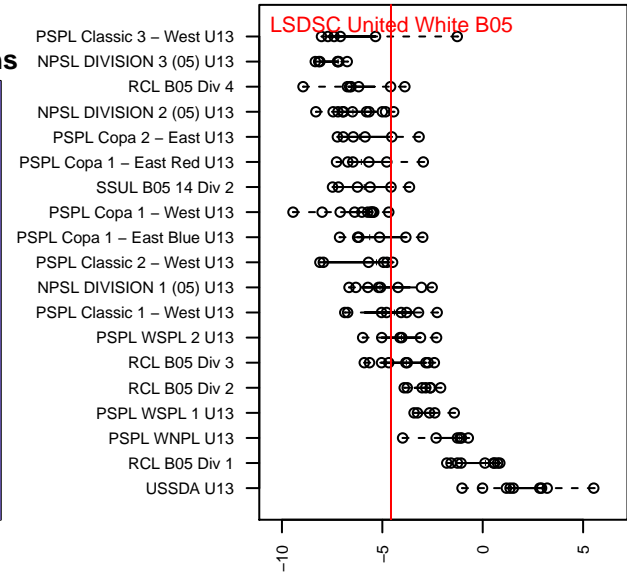
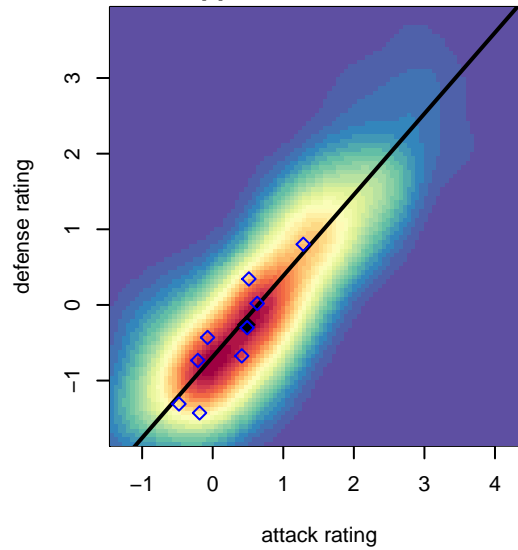
**LSDSC United White B05**  
Dots are actual minus expected GF (blue circles) and GA (red triangles).  
Blue line is smoothed change in attack strength. Red is smoothed change in defense strength.



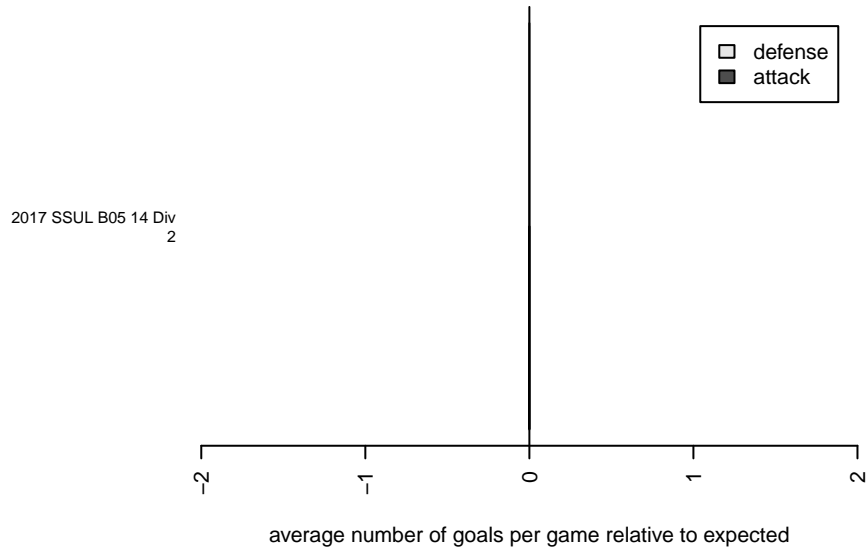
**attack and defense variance (black dot)  
relative to other teams  
and top 10 in region**



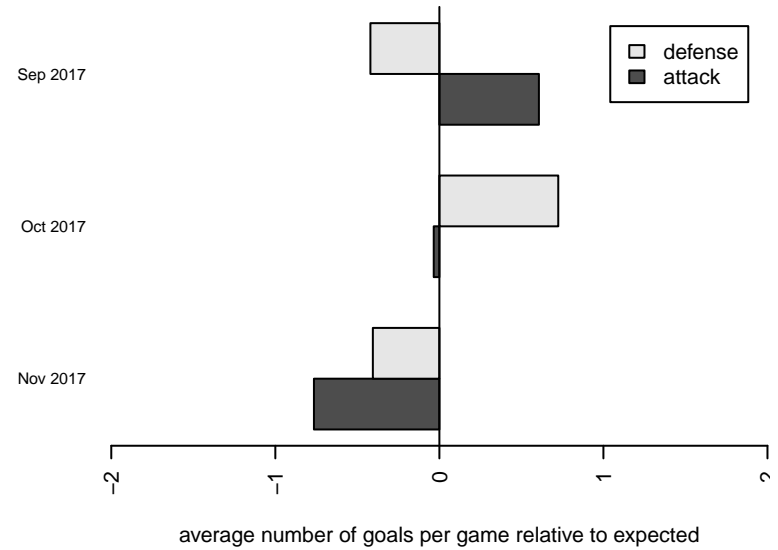
**attack and defense rating  
relative to others at age  
and all opponents in last 13 months**



**Performance relative to 13 month average**



**Performance relative to 13 month average**



<b>date</b>	<b>home</b>		<b>away</b>		<b>venue</b>	<b>pred.home</b>	<b>pred.away</b>
2017-11-18	LSDSC United White B05	1	WP Markquart B04	3	2017 SSUL B05 14 Div 2	1.73	2.42
2017-11-11	Southlake Select Red B04	4	LSDSC United White B05	1	2017 SSUL B05 14 Div 2	2.13	2.37
2017-11-04	LSDSC United White B05	1	Nortac Hounds B05	1	2017 SSUL B05 14 Div 2	1.19	2.23
2017-10-28	FWFC Sharks B04	1	LSDSC United White B05	4	2017 SSUL B05 14 Div 2	1.89	3.07
2017-10-21	Kent United Green B05	1	LSDSC United White B05	6	2017 SSUL B05 14 Div 2	1.30	6.76
2017-10-14	LSDSC United White B05	3	UPSC United White B05	2	2017 SSUL B05 14 Div 2	2.52	1.19
2017-10-07	STU Evolution Araujo B04	2	LSDSC United White B05	0	2017 SSUL B05 14 Div 2	4.52	0.79
2017-09-30	Harbor Rockets B05	0	LSDSC United White B05	3	2017 SSUL B05 14 Div 2	0.77	6.00
2017-09-23	LSDSC United White B05	6	UPSC Crusaders B05	2	2017 SSUL B05 14 Div 2	3.47	1.00
2017-09-16	LSDSC United White B05	2	WP Markquart B04	2	2017 SSUL B05 14 Div 2	1.73	2.42
2017-09-09	LSDSC United White B05	5	Southlake Select Red B04	4	2017 SSUL B05 14 Div 2	2.37	2.13